

# IRIS VALVE

The Vortex Iris Valve is designed specifically to handle dry bulk solids in gravity discharge of free-flowing material from bins, bulk bags, chutes, and hoppers. The Vortex Iris Valve is designed with stainless steel control rings, metal handle and trigger lock, and nylon shim for durability and smooth actuation. A form fitted fabric sleeve provides a dust tight seal and product barrier that prevents material leakage to atmosphere.

**GRAVITY FLOW**

**DILUTE PHASE PNEUMATIC CONVEYING** (Pressure or Vacuum)

**DENSE PHASE PNEUMATIC CONVEYING**

## FEATURES



Handles powders, granules and pellets



Ideal for bulk bag unloading



Smooth actuation with no binding or galling



Unrestricted opening



Fabric sleeve prevents material degradation



Stainless steel control ring

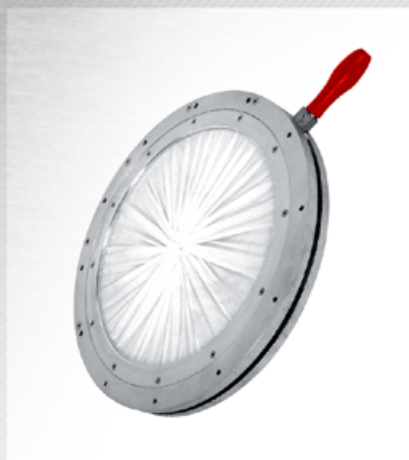


Material construction options available



Standard sizes: 4" - 18"  
Contact us for custom sizes





**INFINITE POSITION**



**QUICK LOCK**



**TOTE HANDLE**

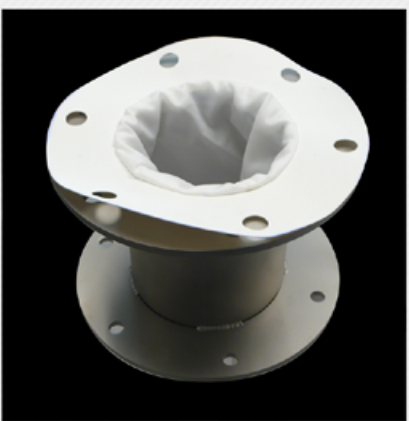
OPTIONS



Preset positions for quick adjustments of material flow

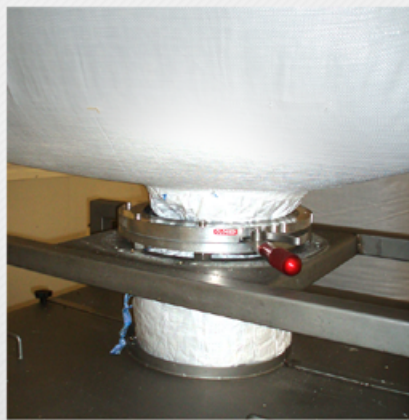


Stainless steel control ring increases torque when closing on a column of material

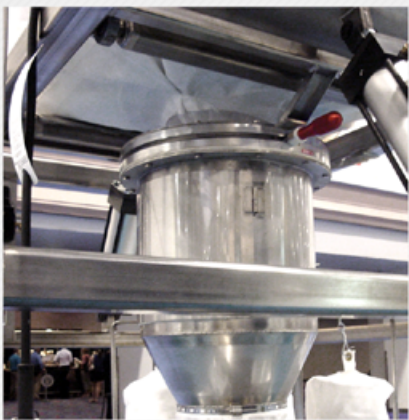


Optional replaceable wear liner reduces sleeve contact and extends valve life

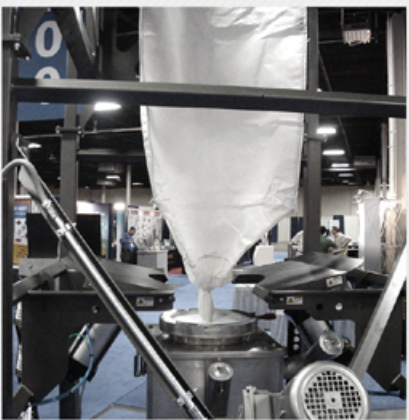
DETAILS



12" (305mm) Iris Valve on bulk bag discharge



18" (457mm) Iris Valve on bulk bag discharge



15" (381mm) Iris Valve on bulk bag discharge

APPLICATIONS

For a complete list of specifications, modifications, dimensional drawings and measurements, visit [WWW.VORTEXVALVES.COM](http://WWW.VORTEXVALVES.COM)